

## HEATING & COOLING

### EMERGENCY CONTACT:

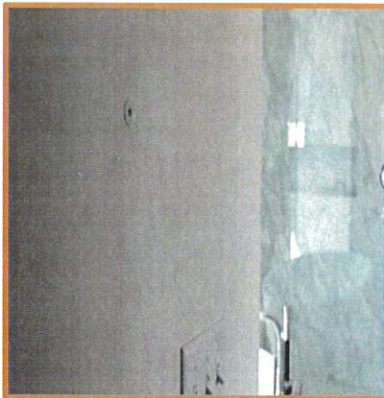
Energy 1

406-587-2917



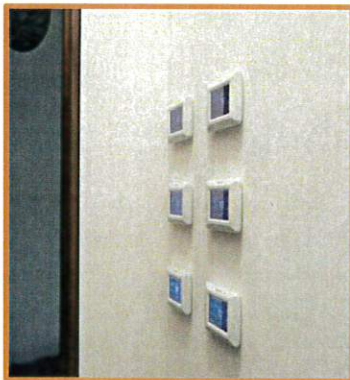
#### Main House HVAC System

- The main house heating and cooling system is provided for by an 11 ton closed-loop geothermal system.
- The system consists of 6 boreholes and 3 heat pumps.
- The bore field is located north-east of the house.
- Inspections need to happen annually for all equipment related to the geothermal system.



#### HVAC Sensors

- The HVAC sensors can be found in all rooms with forced heating and cooling.
- The primary purpose of the sensors are to monitor and control the heating and cooling system throughout the house.
- The sensors act only as signal to the thermostat, and you can not control the temperature from the room itself.



#### Underfloor Radiant Heat Controls

- The underfloor radiant heat controls can be found on the lower level in Storage - 016.
- All floors in the house have radiant heat and the different zones can be found in the Energy 1 manual on page 14 & 15.
- The radiant floor system is supplemented by two propane-fired boilers during peak heating demands.